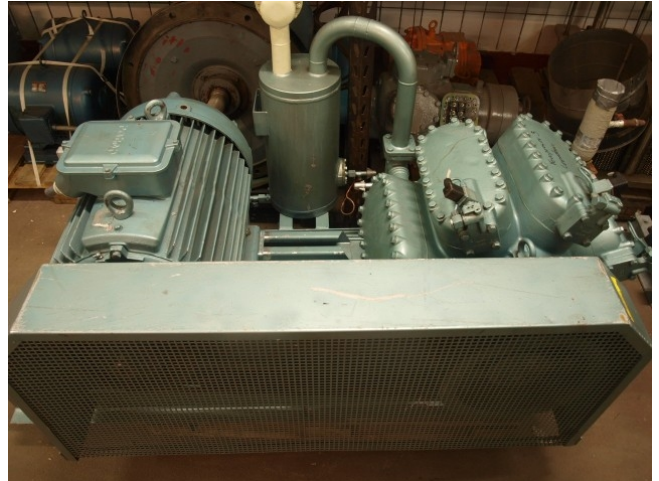


Grasso RC 86

Specifications

Brand	Grasso
Type	RC 86
Refrigerant	NH 3 / Freon
kW at -10°C/+40°C	110,4
kW at -20°C/+40°C	66,3
kW at -30°C/+40°C	35,2
Electromotor Specs	55 kW at 1475 RPM
Unloaded Start	✓
Capacity Control	✓
On steel base frame	✓
Pressure safety switches	✓
Hp/Lp/Op	
Oil separator	✓
Remarks	Oil sep. 22,5 ltr. // Pully EM: 320 mm / Compr. 400 mm
Sizes	1880x1170x1350 mm (LxWxH)
Stock	1



Description

Used Grasso RC 86

